



Land for Sale with views of the Garraf in Pineda Park- Sant Pere de Ribes

Ref: 15336



Sant Pere de Ribes / Barcelona Costa Sur

Nice land 860.60m² fully developable. It has open views of the Garraf Natural Park. Land for a single-family house, 345m² can be built. Great opportunity to acquire a good land at a very interesting price. He has an architectural project done. The plot has 862 m² without building and you can build a single-family home with a maximum floor area of 129 m² and a total of 388 m², on the ground floor + first floor + attic. Urban planning regulations (10.1gb – Isolated low-density building): Minimum plot 800m² Maximum buildability of 0.45m²/m² land Maximum occupancy 15% Minimum facade of 20m² Maximum regulatory height 11m = ground floor Auxiliary construction: Within 15% of maximum occupancy Permitted use: Isolated building. Pineda Park is an urbanization belonging to the municipality of Sant Pere de Ribes that is booming and experiencing great growth, and in the heart of Garraf Park. Very well connected to the C-32 and a few minutes from Sitges.

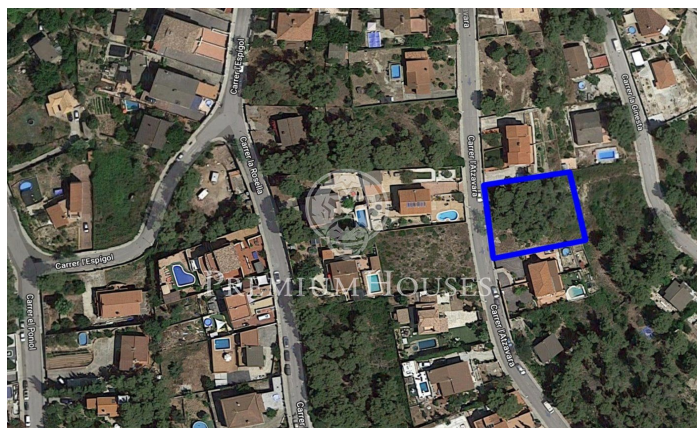
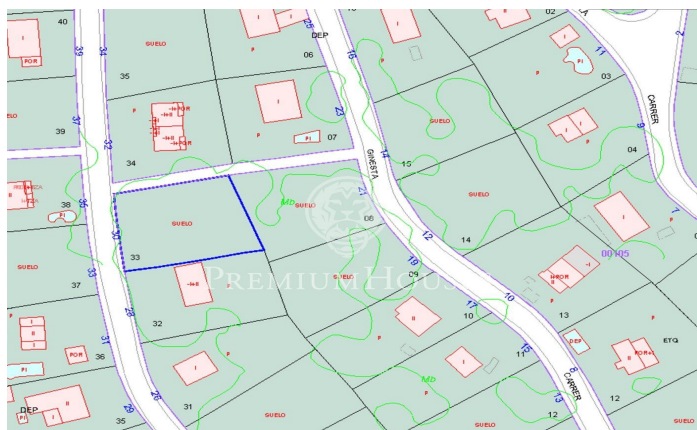
€96,000

862 m² plot



PREMIUMHOUSES
Excellence in Real Estate

Avda. Camí dels Capellans, 81
Local 3 Sitges
Tel: +34 93 809 72 40





PREMIUMHOUSES
Excellence in Real Estate

Avda. Camí dels Capellans, 81
Local 3 Sitges
Tel: +34 93 809 72 40



Contact us for more information or to arrange a viewing

Tel: +34 93 809 72 40

sitges@premiumhouses.com

www.premiumhouses.es

